



Project
FISHNETS
RESTAURANT

Presentation
ART BRIEF

Date
JANUARY 2026

BLAINEY NORTH

Sydney | London | New York

80 Albion St,
Surry Hills, 2010 NSW
Australia

T +61 2 8915 1833
F +61 2 8354 1599
BlaineyNorth.com



Art Brief -

FISHNETS

Welcome to Fishnets, a new Japanese restaurant in Bronte. We are seeking an artist to assist us to create an artwork for the walls.

The artwork should create a visual horizon within the restaurant, a line which explores what exists above and below the water — the seen and the unseen. We imagine the artwork will take the form of a frieze wrapping around the dining room, positioned above the banquettes and layered over an ombré wall treatment that mirrors the colours of dusk. The narrative should unfold as guests move through the space, fluid and rhythmic, echoing the movement of water and the storytelling nature of Japanese folklore. The composition may suggest a transition between worlds, surface calm giving way to a more playful, mysterious, and salacious undercurrent below.

Some inspiration could be from traditional Japanese woodblock prints (ukiyo-e), particularly historic depictions of octopus and marine folklore, reinterpreted through a contemporary lens.

Our main dining room exudes warmth, layered with tones of ochre, clay, blush pinks, and deep reds, evoking the colours of a coastal sunset. Housed within a heritage-listed building, the front façade retains its character through stained glass windows and original blue tiles. Inside, guests are met with a sense of summer nostalgia.

Artists are encouraged to draw inspiration from Japanese mythology, folklore, and traditional woodblock techniques— such as expressive linework, flat planes of colour, and symbolic storytelling reinterpreted through a contemporary lens. The octopus is central to the narrative. Like a sunset, it is a symbol of transformation and regeneration, intelligent, mischievous, and ever-changing in colour, shape, and texture. It embodies the hidden world beneath the water's surface, a dialogue between the diners and the food. The work should feel immersive, poetic, and slightly naughty, reflecting the restaurant's cuisine, name, and spirited personality.

We are offering a **\$10,000 artist fee** plus the cost of paints (to be confirmed once the artist and style are selected) to bring this shared vision to life. In addition, the selected artist will, of course, be looked after for life at Fishnets.

The artist will be requested to complete the following works

- Decorative 'freize' across the restaurant
- Outdoor Mural

Please submit by the **13th of February, 2026** the following:

- A Curated Selection of Past Works
- Illustrate your developed concept for the space through sketches and imagery
- Written Statement outlining your concept and inspiration (max. 150 words)

Please send the above to joanne@blaineynorth.com and rose@blaineynorth.com

Context -

JAPANESE FOLKLORE

Invoking the mystery and charm of Japanese folklore, audiences are implored to look closer to see what's hidden from first glance. A playfulness and devilment hides in plain sight. A fun spirit shines throughout the space, both visually and experientially.

A mix of Japanese folklore and funky references to fishnets. A sly smile, an out stretched leg and wild eyes. The artwork throughout the space echoes the playfulness of the venue.



Context -

CONCEPTUAL IMAGERY

The Dream of the Fisherman's Wife or Tako to Ama, 1814 (bottom middle), is a woodblock print design by the Japanese artist Hokusai.

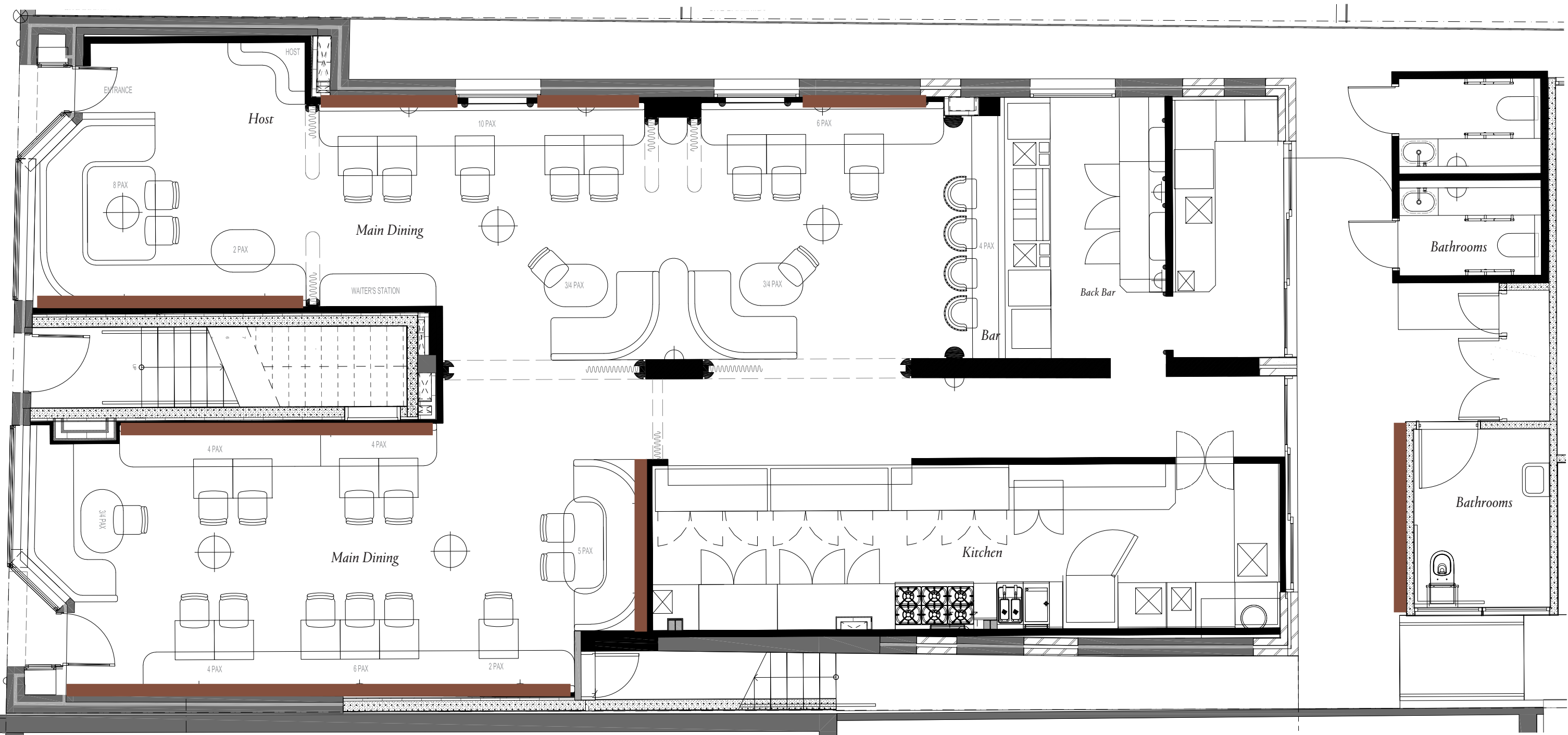
The work was an important image in Hokusai's, Kinoe no Komatsu, a work of shunga within the ukiyo-e genre.

The print depicts an ama, having consensual sexual intercourse with two octopi. In the text above the image the woman and the creatures express their mutual sexual pleasure from the encounter.



Floor Plan -
PLAN

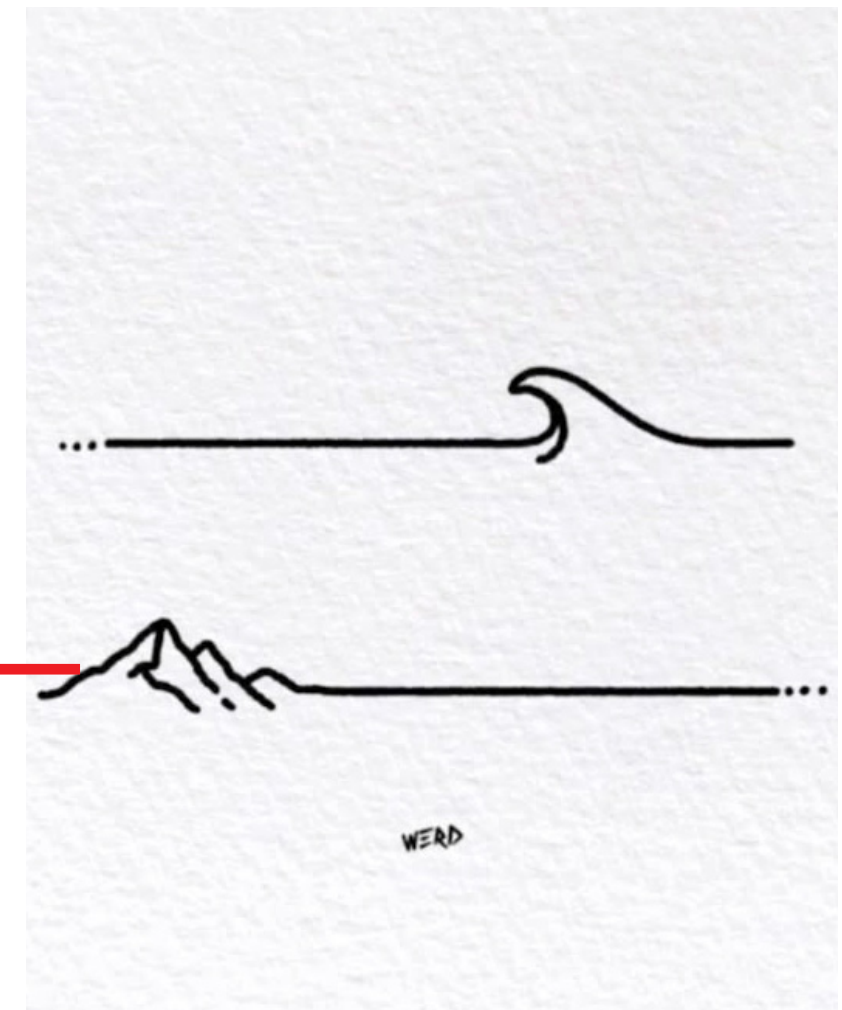
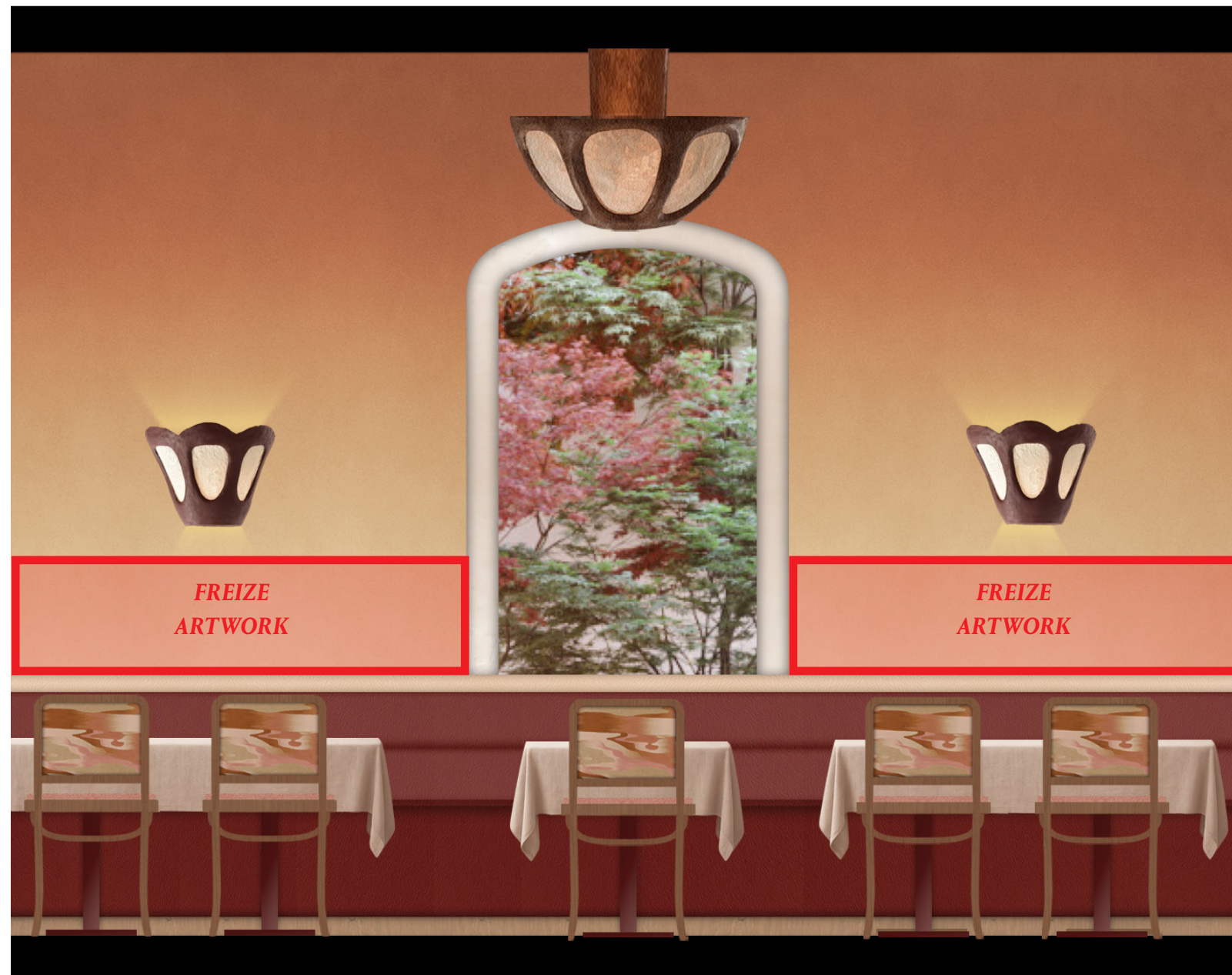
- Freize Works to be painted directly to wall



Inspiration -

FRIEZE

Concept Elevation -



Frieze Inspiration

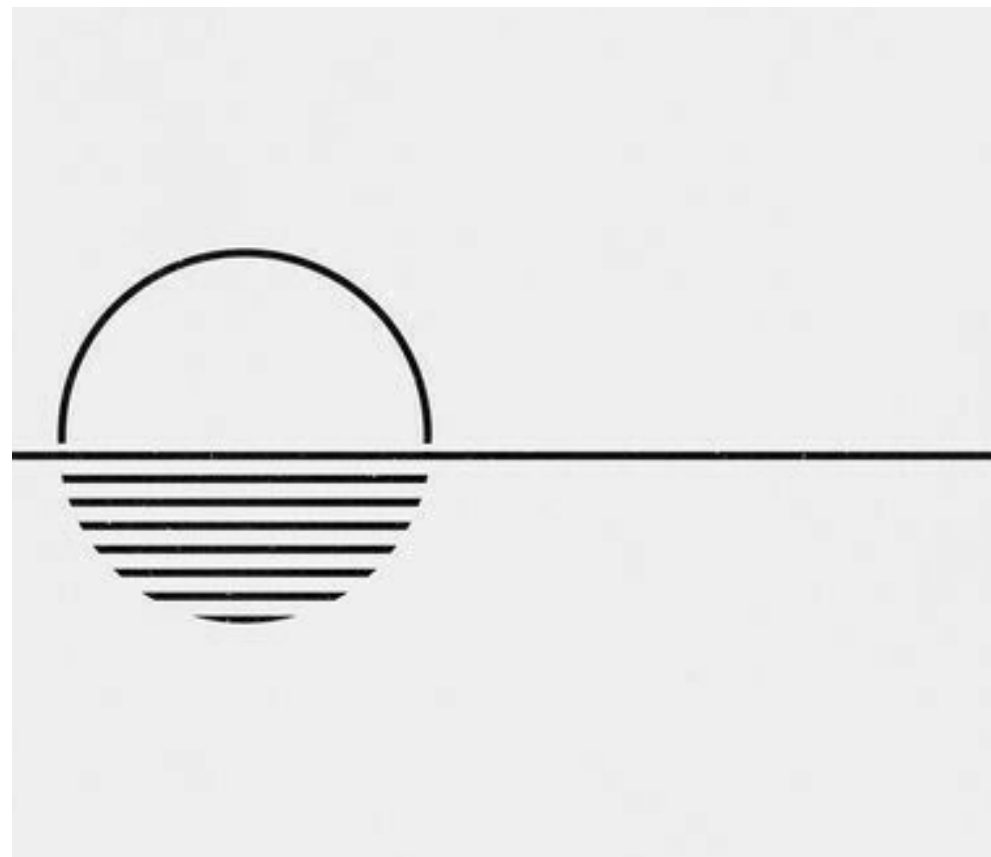
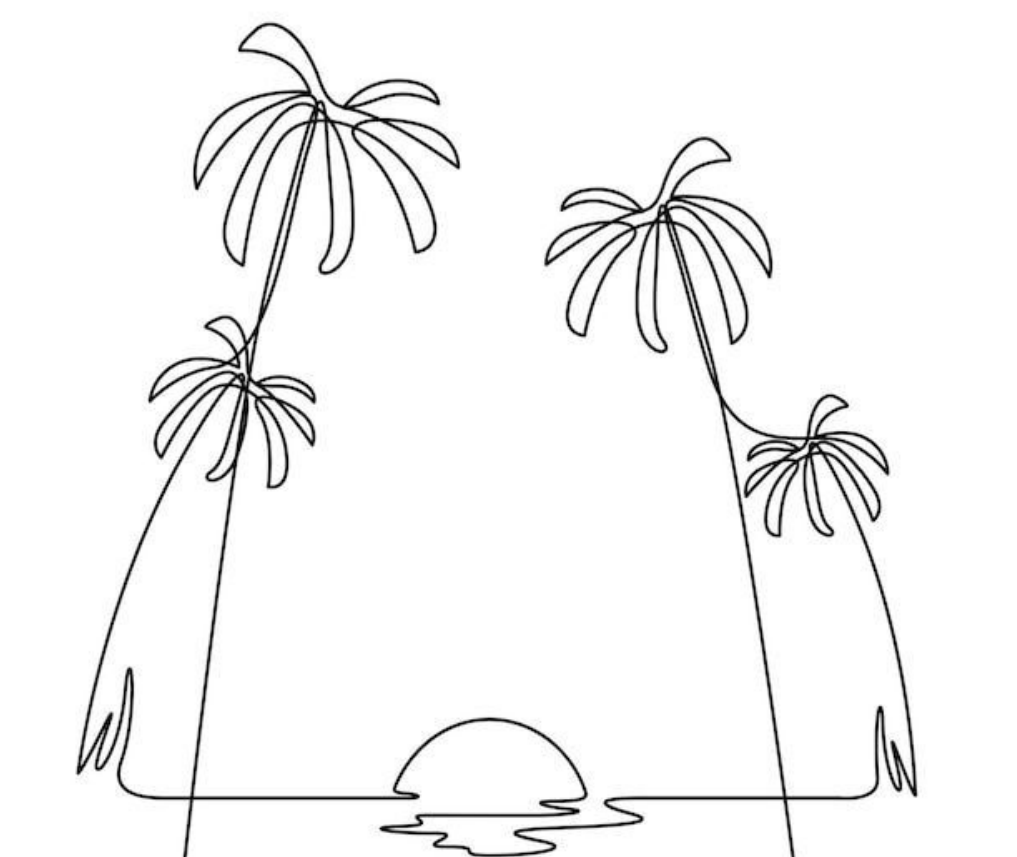
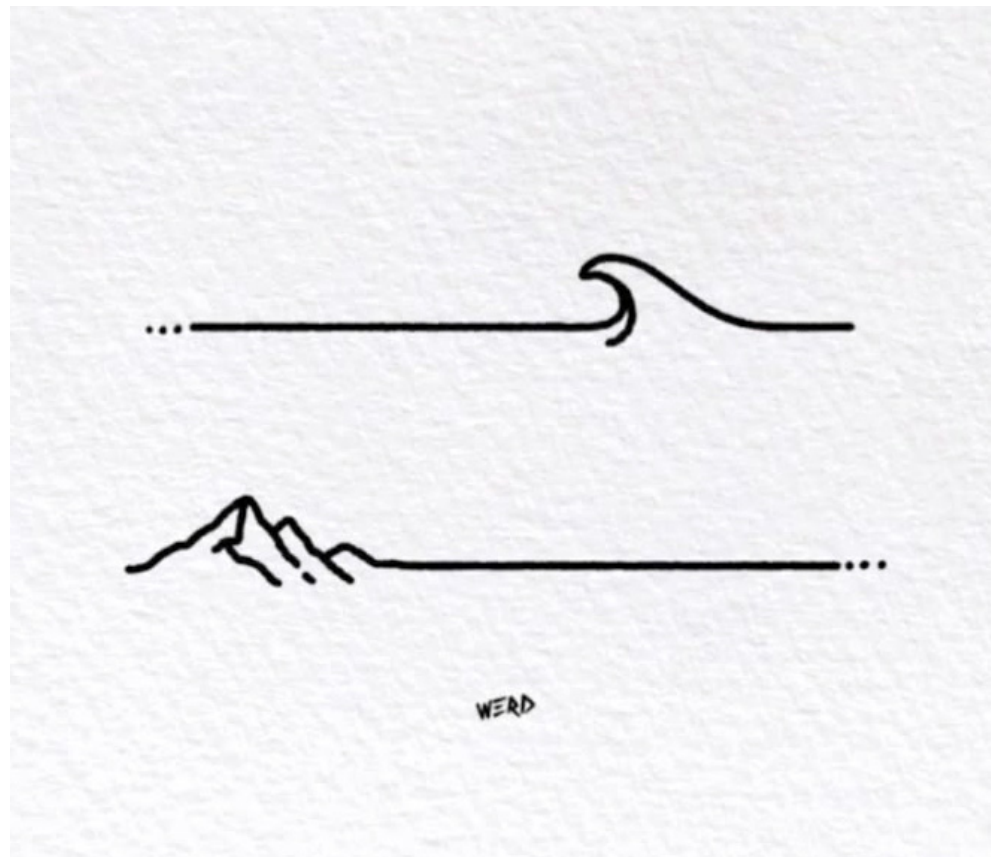
Definition of a Frieze: A long, horizontal decorative band on a building, often featuring sculpted reliefs or paintings.

Fishnet's needs an artists help to create our own frieze. A continuous narrative that wraps itself around the space. A band of expression, figures or motifs that encourage the guests to look closer.

Please note: These artworks are to be used as inspiration for the artist only and are to reference friezes in other venues.

Inspiration -

FRIEZE INSPIRATION

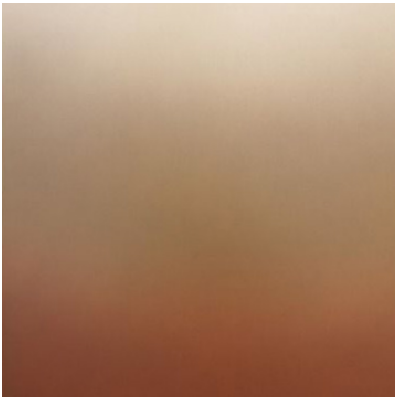


MAIN DINING

Elevation —



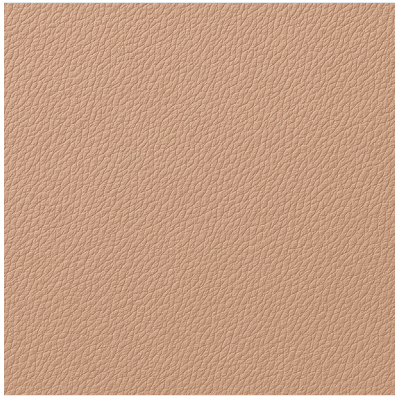
Finishes -



Ombre Wall Finish



Upholstery to Chair



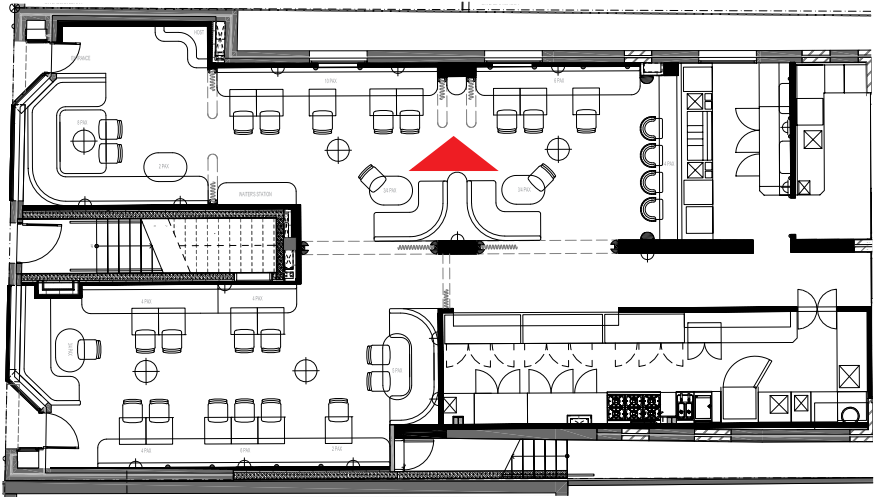
Leather to Banquette



Leather to Banquette



Wood Finish



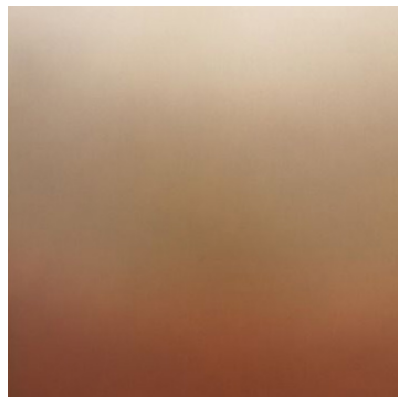
Concept Elevation

MAIN DINING - BANQUETTE SEATING

Elevation —



Finishes -



Ombre Wall Finish



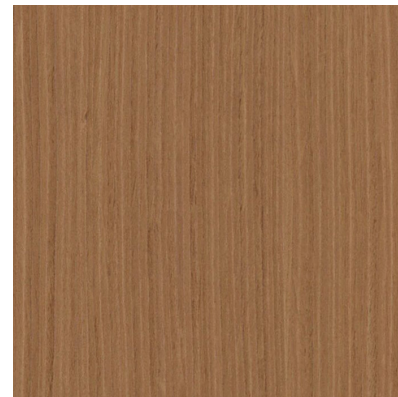
Upholstery to Chair



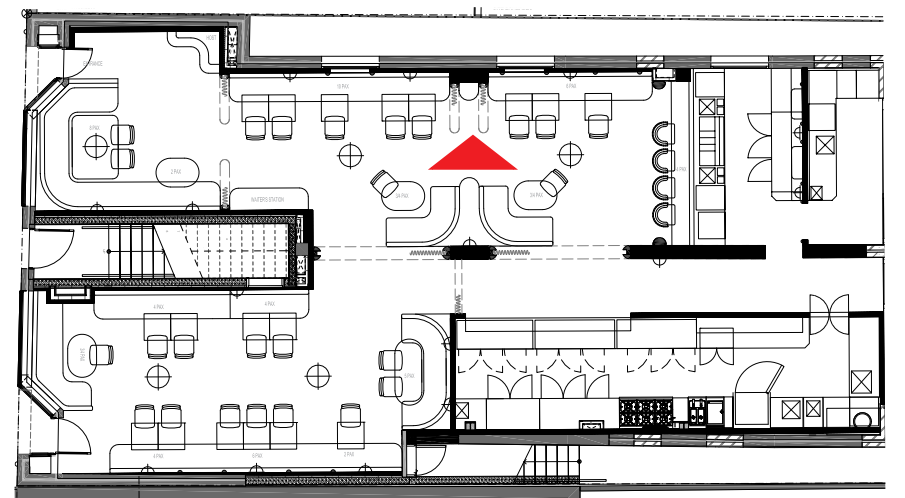
Leather to Banquette



Leather to Banquette



Wood Finish



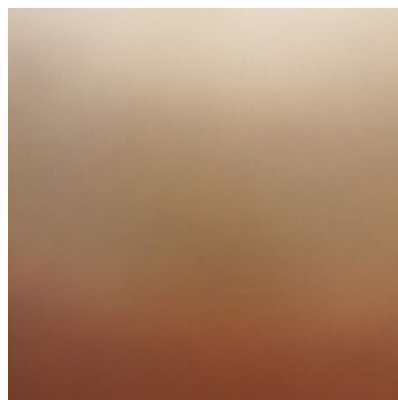
Concept Elevation

MAIN DINING - CENTRAL WALL

Elevation —



Finishes -



Ombre Wall Finish



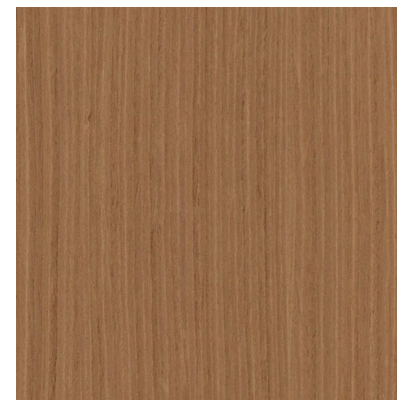
Upholstery to Chair



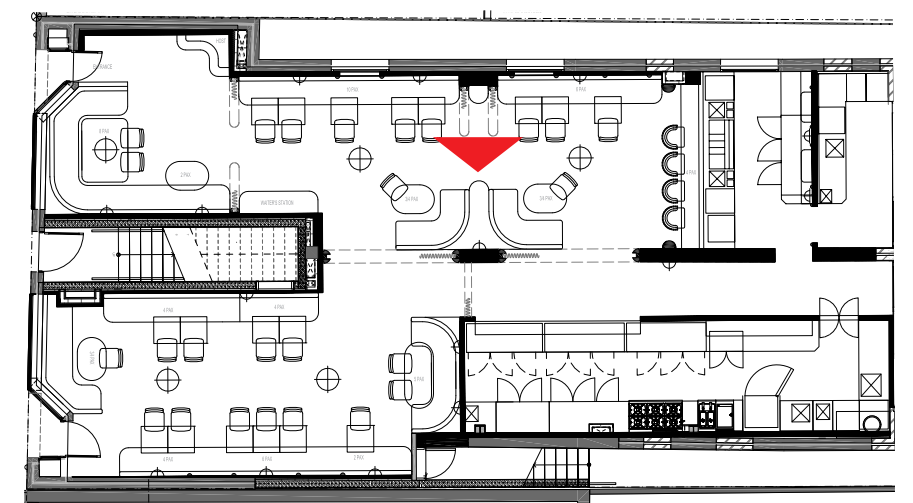
Leather to Banquette



Leather to Banquette



Wood Finish



MAIN DINING

Elevation — Please note: These artworks are to be used as inspiration for the artist only



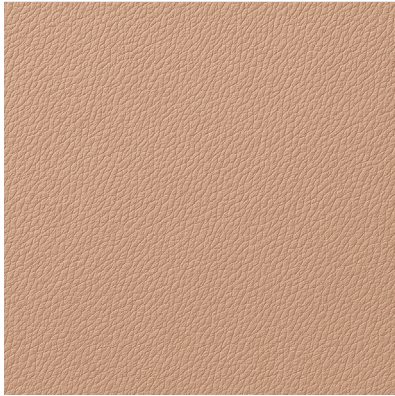
Finishes -



Ombre Wall Finish



Upholstery to Chair



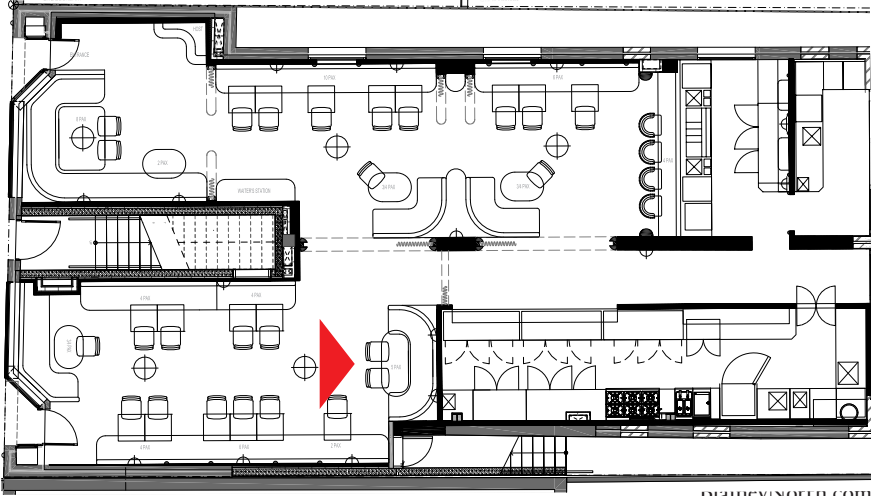
Leather to Banquette



Leather to Banquette



Wood Finish



SYDNEY | LONDON | NEW YORK

80 Albion St, Surry Hills
NSW 2010, Australia

+61 2 8915 1833
enquiries@blaineynorth.com

BlaineyNorth.com
BlaineyNorthCollection.com